



Weld County Oil & Gas Location Assessment (1041 WOGLA)



Lighting Plan Code Requirements and Guidance

Lighting plans are required for all Oil and Gas Locations, for both the Construction Phase and if applicable the Production Phase. Sec. 21-5-405.

Lighting plans for the Construction Phase and Production Phase should be clearly separated in order to address specific lighting needs and layouts, and phase specific BMPs and/or other mitigation measures.

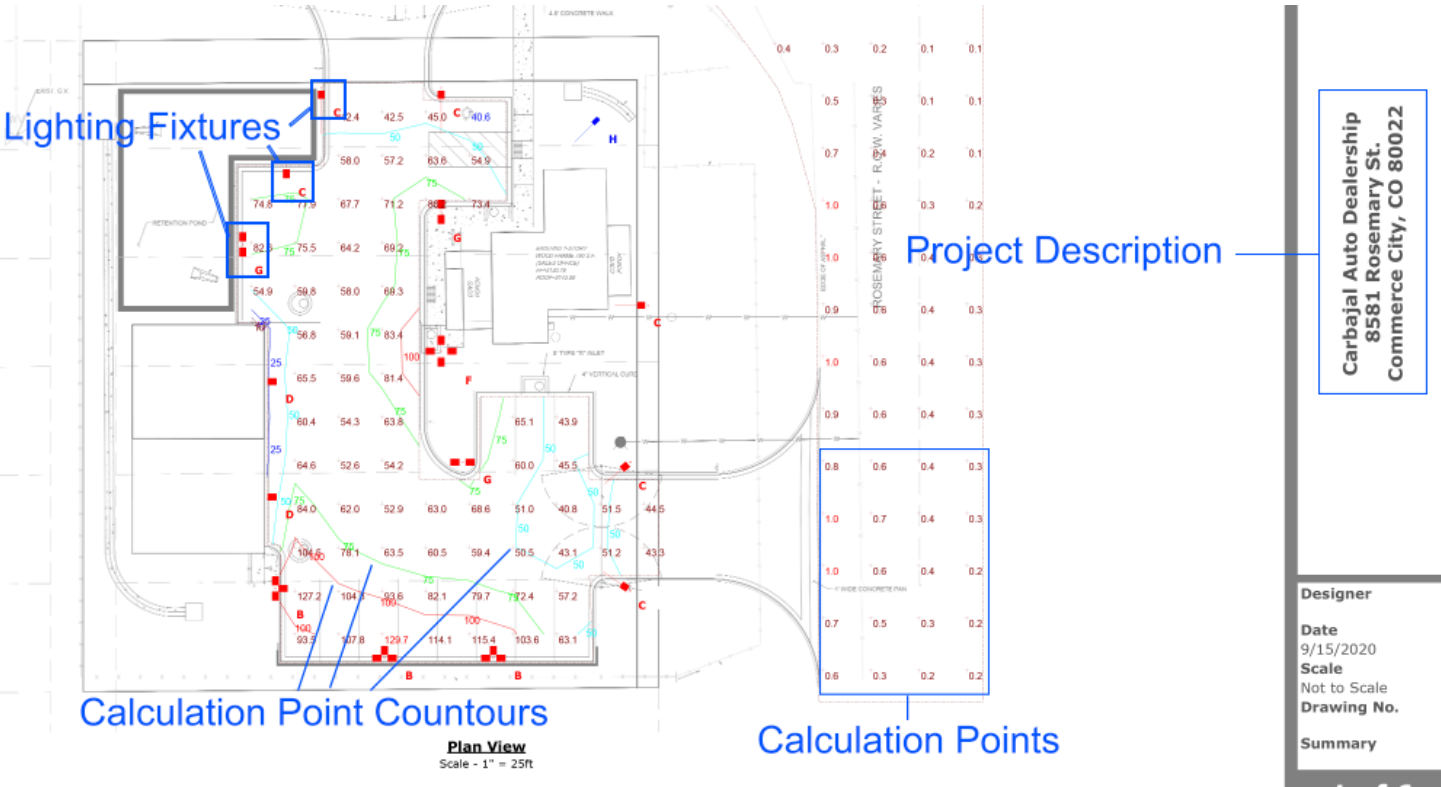
It is important to note that the Construction Phase includes pad construction, drilling, and well completions. Once the well(s) are first turned to sales, or interim reclamation occurs, then the pad enters the Production Phase. See Sec. 21-5-20.

The following items are to be included within lighting plans. OGED may request other information to be included or shown within the plan, depending on the land uses and circumstances surrounding the Oil and Gas Location.

All pictures or diagrams shown in this guidance document are not referencing actual Oil and Gas Locations and are for reference only.



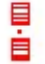


Site Plan

The drawing shall be a scaled drawing of the Oil and Gas Location, including 100 feet beyond the Location boundary, showing lighting fixture locations as well as calculation points detailing the number of footcandles a specific point on the site plan has. Separate drawings should be submitted for the Construction Phase and Production Phase.



Lighting Schedule

The lighting schedule shows the different lighting fixtures proposed for the Oil and Gas Location, for both the Construction Phase and Production Phase. The lighting schedule could be included on the site plan drawings if space allows. The lighting schedule should include, at minimum, a symbol identifying each type of fixture, the quantity of each fixture, the catalog number of each fixture, and the lumens per fixture.

Schedule						
Symbol	Label	QTY	Manufacturer	Catalog Number	Description	Lumens per Lamp
	C	3	Lumipro Lighting	1-ST-RM300-50K-A	Slipfitter	39536
	F	1	Lumipro Lighting	1-ST-RM300-50K-A 4 way	Slipfitter	39536
	G	3	Lumipro Lighting	1-ST-RM300-50K-A 2 way	Slipfitter	39536
	B	3	Lumipro Lighting	1-ST-RM300-50K-A 3 way	Slipfitter	39536
	D	2	Lumipro Lighting	1-ST-RM300-50K-B	Wall Mounted	39536

Spec Sheets

Spec sheets will be provided for each fixture included within the lighting plan. The spec sheets should provide additional information for each fixture detailed on the lighting schedule. The catalog number provided on the lighting schedule should be able to be referenced on the spec sheets.

The spec sheets, at minimum, will prove how the proposed lighting fixtures will limit light trespass by utilizing lighting standards including but not limited to those listed in Sec. 21-5-405.E.

If polar plots are not part of the spec sheet, they will be provided as a separate document for each fixture.

Backlight, Uplight and Glare (BUG) Ratings may be submitted as part of the spec sheet package and may replace the need to provide polar plot diagrams.

Other items which may be included in lighting plans:

Calculation zone statistics – showing the average footcandle rating in the calculation zone, and the brightest and least bright points in the calculation zone.

Luminaire location schedule – allows for review of the location and direction of each fixture. Also allows easy review of the mounting height and angle.

Photometric Plan – Shaded View - the shaded view allows review of the light levels of the site by interpreting it as a shaded heat map. The shaded view drawing is in addition to the site plan drawing.

