

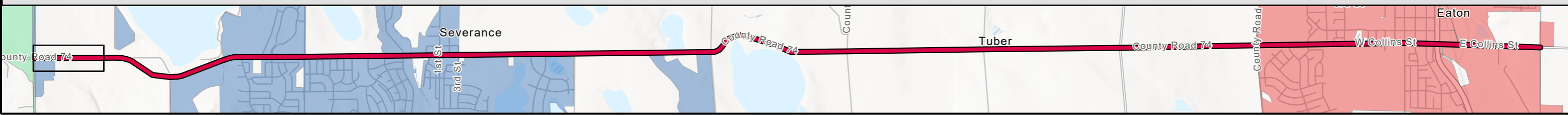
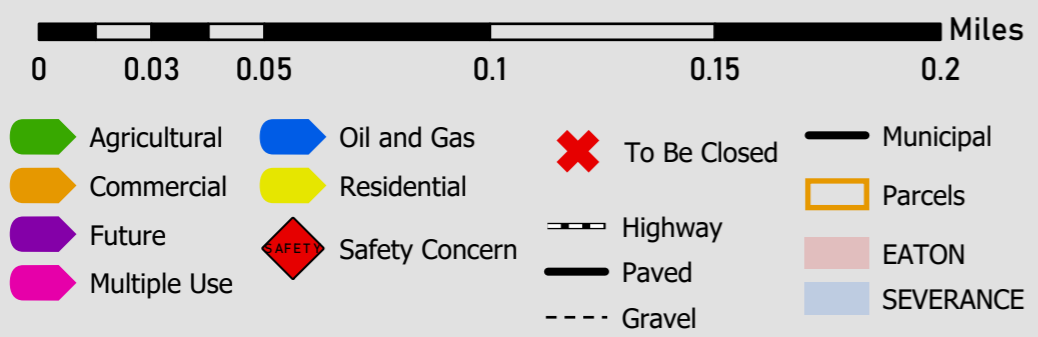
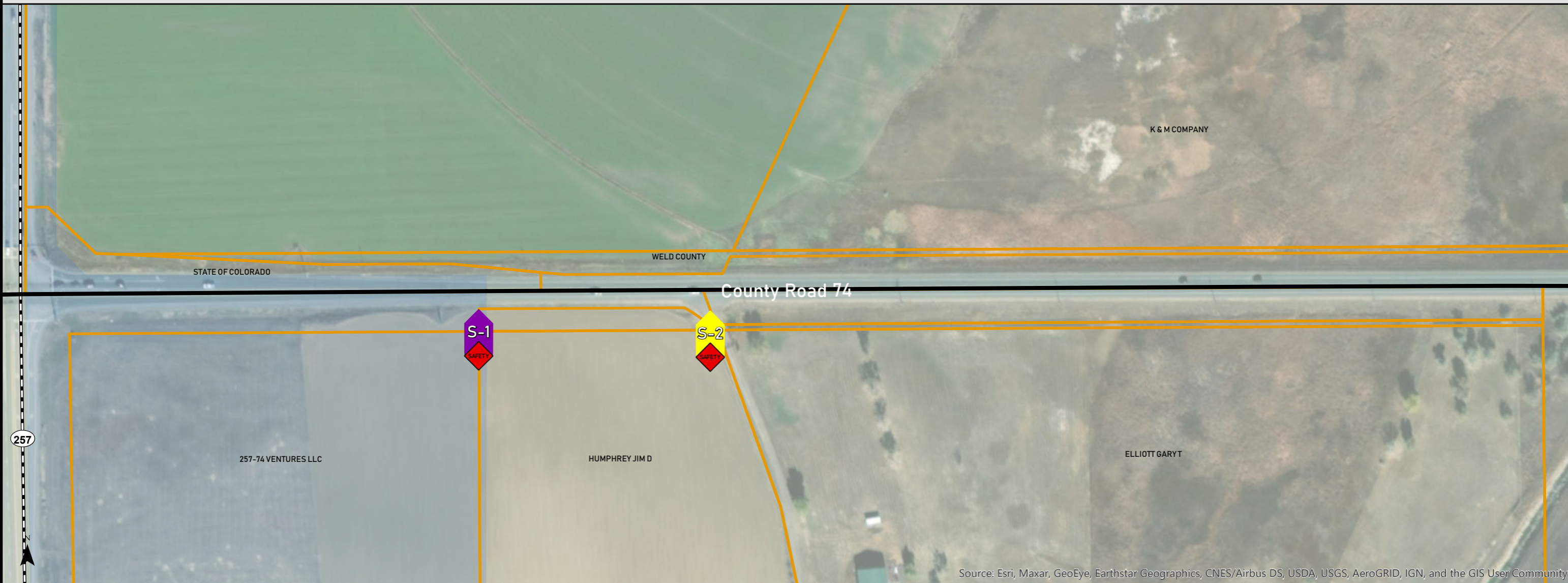
Access Inventory and Recommendations

ID	Map #	Address	Jurisdiction	Use/Type	Description	Safety Concern	Recommendations
S-1	1		Weld County	Residential	Future access. Access is shown on RE-3568 plat.	Spacing	This is only access to Lot A of RE-3568. Consolidate with S-2 if constructed. Future Access.
S-2	1	8236 CR 74	Weld County	Residential	Gated residential access.		Shared access with RE-3568.
N-1	2		Weld County	Agricultural	Low use field access.	Spacing	Relocate S-3 to meet spacing requirements.
S-3	2		Weld County	Agricultural	Low use ditch/field access.	Spacing	Relocate to meet spacing requirements.
S-4	2	8612 CR 74	Weld County	Residential	Shared residential access. Shown on 3rdAmRECX-326 plat.	Spacing/Sight Distance	Relocate to line up with WCR 17 3/4.
N-2	3		Severance	Commercial	Seasonal use access for reservoir.	Sight Distance	
S-5	3		Severance	Multiple Use	Low use access.	Sight Distance	
S-6	4	9672 CR 74	Severance	Residential	Single residence.	Spacing	Consolidate when feasible.
N-3	4		Severance	Agricultural	Low use field access.	Spacing	Working with Fox Ridge to close this access.
N-4	4	9847 CR 74	Severance	Commercial	Heavy use commercial access.	Spacing	Commercial access.
N-5	4	9847 CR 74	Severance	Commercial	Heavy use commercial access.	Spacing	Commercial access.
S-7	5	3 Timber Ridge Parkway	Severance	Commercial	Right in access with no exiting traffic.	Spacing	
N-6	5	10435 CR 74	Severance	Residential	Shared residential access.	Spacing	Relocate to meet spacing requirements.
S-8	5	10550 CR 74	Severance	Residential	Single residence.	Spacing	Consolidate when feasible.
S-9	6	10564 CR 74	Severance	Residential	Single residence.	Spacing	Consolidate when feasible.
N-7	6		Severance	Agricultural	Low used field access. Show on RECX18-0146 plat.	Spacing	
N-8	6	10609 CR 74	Severance	Residential	Single residence.	Spacing	Consolidate when feasible.
N-9	6	10621 CR 74	Severance	Residential	Single residence.	Spacing	Consolidate when feasible.
N-10	6	10845 CR 74	Severance	Commercial	Low use commercial access.	Spacing	Consolidate with N-11 when feasible.
S-10	6	10822 CR 74	Severance	Residential	Single residence.	Spacing	Consolidate when feasible.
N-11	6	10845 CR 74	Severance	Commercial	Low use commercial access.	Spacing	Consolidate with N-10 when feasible.
N-12	6	161 East 4th Street	Severance	Residential	Single residence.	Spacing	Consolidate when feasible.
N-13	6	141 East 4th Street	Severance	Residential	Single residence.	Spacing	Consolidate when feasible.
N-14	6	133 East 4th Street	Severance	Residential	Single residence.	Spacing	Consolidate when feasible.
N-15	6	125 East 4th Street	Severance	Residential	Single residence.	Spacing	Consolidate when feasible.
S-11	6	106 East 4th Street	Severance	Commercial	Commercial access.	Spacing	Relocate access to 1st Street when feasible.
S-12	6,7		Severance	Residential	Vacant Lot.	Spacing	Relocate access to 1st Street when feasible.
S-13	6,7		Severance	Residential	Vacant Lot.	Spacing	Consolidate when feasible.
S-14	6,7		Severance	Residential	Vacant Lot.	Spacing	Consolidate when feasible.
N-16	7	145 East 4th Street	Severance	Commercial	Commercial access.	Spacing	
S-15	7		Severance	Residential	Vacant Lot.	Spacing	Consolidate when feasible.
S-16	7	206 East 4th Street	Severance	Residential	Shared residential access	Spacing	Consolidate when feasible.
S-17	7	216 East 4th Street	Severance	Residential	Vacant Lot.	Spacing	Consolidate when feasible.
N-17	7		Severance	Residential	Shared residential. Alley.	Spacing	
S-18	7	232 East 4th Street	Severance	Residential	Vacant Lot.	Spacing	Consolidate when feasible.
S-19	7	240 East 4th Street	Severance	Residential	Vacant Lot.	Spacing	Consolidate when feasible.
S-20	7	11160 CR 74	Severance	Residential	Single residence.	Spacing	Hopefully removed or relocated to 3rd St
S-21	7	11230 CR 74	Severance	Residential	Access to be closed when 6th Street is constructed.	Spacing	Remove access when feasible. To be Closed.
N-18	7		Severance	Residential	Future access	Spacing	Future access
N-19	7	11401 CR 74	Severance	Residential	Future access. Access is shown on RE-2449 plat.	Spacing	Share access rather than build new access. Future
N-20	7	11401 CR 74	Severance	Residential	Single residence. Access is shown on RE-2449 plat.	Spacing	Consolidate with N-19 and/or N-21 when feasible.
N-21	7	11421 CR 74	Severance	Residential	Single residence. Access is shown on RE-2449 plat.	Spacing	Consolidate with N-20 when feasible.
N-22	8		Severance	Oil and Gas	Oil and gas access.	Spacing	Consolidate with N-23 when feasible.
S-22	8		Severance	Agricultural	Field access. To be closed and reclaimed.	Spacing	Consolidate when feasible with County Shop. To be closed.
N-23	8	11515 CR 74	Severance	Residential	Single residence.	Spacing	Consolidate with N-22 when feasible.
S-23	8	11538 CR 74	Severance	Commercial	Low use commercial access.	Spacing	Consolidate when feasible.
N-24	8		Severance	Oil and Gas	Oil and gas access.	Spacing	Consolidate when feasible.
N-25	8	11753 CR 74	Severance	Residential	Single residential access shown on RE-1633 plat.	Spacing	Relocate to meet spacing requirements when feasible.
N-26	8	11981 CR 74	Severance	Residential	Single residence.	Spacing	Consolidate with N-27 when feasible.
N-27	8,9		Severance	Agricultural	Shared agricultural access.	Spacing	Consolidate N-26 and N-28 to relieve spacing concern.
N-28	9	12037 CR 74	Severance	Residential	Single residence.	Spacing	Consolidate with N-27 when feasible.
N-29	9		Severance	Residential	Future access	Spacing	Future access
S-24	9	12164 CR 74	Severance	Residential	Single residence. RE-666.	Spacing	Align with N-30 when feasible.
N-30	9		Severance	Agricultural	Low use field access. RE-1646.	Spacing	Align with S-24 when feasible.
N-31	9	12221 CR 74	Severance	Residential	Horseshoe access.	Spacing	To be closed when feasible. N-32 will be utilized.
N-32	9	12221 CR 74	Severance	Residential	Single residence.	Spacing	To be utilized when N-31 is closed.
N-33	9	12275 CR 74	Severance	Agricultural	Agricultural access	Spacing	Agricultural access
N-34	9	12275 CR 74	Severance	Residential	Single residence.	Spacing	Consolidate with N-33 when feasible.
S-25	9	12276 CR 74	Severance	Residential	Single residence.	Spacing	Consolidate when feasible.
N-35	9	12295 CR 74	Severance	Multiple Use	Shared residential.	Spacing	To be utilized when N-36 is closed.
N-36	9	12295 CR 74	Severance	Multiple Use	Horseshoe access.	Spacing	To be closed when feasible. N-35 will be utilized.
N-37	9		Severance	Residential	Future access		Future access
S-26	9	12420 CR 74	Severance	Residential	Single residence. RE-4806 (Lot A).	Spacing	Consolidate when feasible.
N-38	9,10		Severance	Agricultural	Low use field access.	Spacing	Consolidate when feasible.
S-27	10	12498 CR 74	Severance	Residential	Single residence. RE-4806 (Lot B).	Spacing	Consolidate when feasible.
N-39	10	12501 CR 74	Severance	Residential	Single residence. RE-1223.	Spacing	Align with S-27 when feasible.
S-28	10	12830 CR 74	Severance	Residential	Shared access. RE-3548.	Spacing	Align with N-40 when feasible.
N-40	10		Severance	Residential	Single Residence. RECX15-0101.	Spacing	Align with S-28 when feasible.
S-29	10		Severance	Residential	Shown on RE-3548 plat.	Spacing	Consolidate with S-28 or S-30. Future.
S-30	10		Severance	Residential	Shown on RE-3548 plat.	Spacing	Consolidate with S-29. Future.
N-41	11	13329 CR 74	Weld County	Residential	Single residence. RE-3678.	Spacing/Sight Distance	Relocate to safer location when feasible.
S-31	11	13462 CR 74	Weld County	Residential	Horseshoe access.	Spacing/Sight Distance	To be closed when feasible. S-32 will be utilized.
S-32	11	13462 CR 74	Weld County	Residential	Single residence. Horseshoe access.	Spacing/Sight Distance	To be utilized when S-31 is closed.
S-33	12	13696 CR 74	Weld County	Residential	Shared residential access.	Spacing/Sight Distance	
N-42	12		Weld County	Oil and Gas	Oil and gas access.	Spacing/Sight Distance	Consolidate when feasible.
N-43	12	13813 CR 74	Weld County	Residential	Single residence.	Spacing	Consolidate when feasible.
N-44	13		Weld County	Multiple Use	Horseshoe access.	Spacing	To be utilized when N-45 is closed.
N-45	13		Weld County	Oil and Gas	Horseshoe access.	Spacing	To be closed when feasible. N-44 will be utilized.
S-34	13	18170 CR 74	Weld County	Agricultural	Low use field access.	Spacing	Consolidate when feasible.
N-46	13	14339 CR 74	Weld County	Residential	Shared access. RE-4068.	Spacing/Sight Distance	
S-35	13	18170 CR 74	Weld County	Agricultural	Field access.	Spacing/Sight Distance	Consolidate with S-36 when feasible.
S-36	13	18170 CR 74	Weld County	Residential	Single residence.	Spacing/Sight Distance	Consolidate with S-37 when feasible.
N-47	13	14359 CR 74	Weld County	Residential	Single residence.	Spacing/Sight Distance	Consolidate with N-46 when feasible.
S-37	13	18170 CR 74	Weld County	Residential	Single residence.	Spacing/Sight Distance	Consolidate with S-36 when feasible.
N-48	13	14451 CR 74	Weld County	Residential	Horseshoe access.	Spacing/Sight Distance	To be closed when feasible. N-49 will be utilized.
S-38	13	18170 CR 74	Weld County	Agricultural	Agricultural access	Spacing	Agricultural access
N-49	13	14451 CR 74	Weld County	Residential	Horseshoe access.	Spacing/Sight Distance	To be utilized when N-48 is closed.
N-50	13,14		Weld County	Agricultural	Low use field access.	Spacing/Sight Distance	Consolidate when feasible.
S-39	13,14		Weld County	Agricultural	Low use field access.	Spacing/Sight Distance	Consolidate when feasible.
S-40	14	18170 CR 74	Weld County	Residential	Single residence.	Spacing	Consolidate with S-41 when feasible.
N-51	14		Weld County	Agricultural	Low use field access.	Spacing	To be closed when feasible. N-52 will be utilized.
S-41	14	18170 CR 74	Weld County	Agricultural	Low use field access.	Spacing	Consolidate with S-40 and/or S-42 when feasible.
N-52	14		Weld County	Agricultural	Low use field access.	Spacing	To be utilized when N-51 is closed.
S-42	14	14790 CR 74	Weld County	Residential	Single residence.	Spacing	Consolidate with S-41 when feasible.
S-43	14	14886 CR 74	Weld County	Residential	Single residence.	Spacing	Consolidate with S-44 when feasible.
N-53	14	14885 CR 74	Weld County	Residential	Single residence. RE-2351.	Spacing	
S-44	14		Weld County	Residential	Single residence	Spacing	Consolidate with S-42 when feasible.
N-54	15	15427 CR 74	Weld County	Residential	Single residence. RE-4831.	Spacing	Consolidate when feasible.
S-45	15	15486 CR 74	Weld County	Residential	Shared access. RE-4039.	Spacing	Consolidate when feasible.
S-46	16	15590 CR 74	Weld County	Residential	Shared access. RE-3964.	Spacing	Consolidate when feasible.
N-55	16		Weld County	Residential	Shared access. RE-4928.	Spacing	Consolidate when feasible.
N-56	16	15681 CR 74	Weld County	Residential	Single residence. RE-4928.	Spacing	Consolidate when feasible.
S-47	16	15710 CR 74	Weld County	Residential	Shared access. RE-3964.	Spacing	Consolidate when feasible.
N-57	16	15777 CR 74	Weld County	Multiple Use	Single residence and oil and gas uses.	Spacing	Consolidate when feasible.
S-48	16		Weld County	Agricultural	Low use field access. RECX15-0098.	Spacing	Consolidate when feasible.
S-49	17	16120 CR 74	Weld County	Multiple Use	Commercial/Agricultural/Residential access.		Access location may change with construction of roundabout.
N-58	17	16275 CR 74	Weld County	Agricultural	Low use field access.	Spacing	Consolidate with N-59 when feasible.
N-59	17	16275 CR 74	Weld County	Residential	Single residence.	Spacing	Consolidate with N-58 when feasible.
N-60	17		Weld County	Oil and Gas	Oil and gas access.	Spacing	Consolidate when feasible.
N-61	17		Weld County	Multiple Use		Spacing	Consolidate when feasible.
S-50	18	16602 CR 74	Weld County	Agricultural	Low use agricultural access.	Spacing	Consolidate with S-51 when feasible.
S-51	18	16602 CR 74	Weld County	Residential	Single residence.	Spacing	Consolidate with S-50 when feasible.
N-62	18	16977 CR 74	Weld County	Agricultural		Spacing	
N-63	18	16977 CR 74	Weld County	Agricultural	Low use field/ditch access.	Spacing	Consolidate with N-64 when feasible.

N-64	18	16977 CR 74	Weld County	Agricultural	Low use field/ditch access.	Spacing	Consolidate with N-63 when feasible.
S-52	18	35945 CR 35	Weld County	Agricultural	Low use field/ditch access.	Spacing	Consolidate when feasible.
N-65	18	16977 CR 74	Eaton	Residential	Single residence.	Spacing	Consolidate when feasible.
N-66	19		Eaton	Commercial	High School access	Spacing	Future access
N-67	19		Eaton	Agricultural	Field access	Spacing	Consolidate when feasible.
S-53	20	17650 CR 74	Eaton	Residential	Single residence.	Spacing	Access to be closed with upcoming development.
N-68	20	907 Collins Street	Eaton	Residential	Single residence.	Spacing	Consolidate when feasible.
N-69	20	903 Collins Street	Eaton	Residential	Single residence.	Spacing	Consolidate when feasible.
N-70	20	827 Collins Street	Eaton	Residential	Single residence.	Spacing	Consolidate when feasible.
N-71	20	807 Collins Street	Eaton	Residential	Single residence.	Spacing	Consolidate when feasible.
N-72	20	715 Collins Street	Eaton	Residential	Single residence.	Spacing	Consolidate when feasible.
N-73	20		Eaton	Residential	Shared residential. Alley.	Spacing	
N-74	20	705 Collins Street	Eaton	Residential	Single residence.	Spacing	Consolidate when feasible.
N-75	20		Eaton	Residential	Shared residential. Alley.	Spacing	
N-76	20		Eaton	Residential	Shared residential. Alley.	Spacing	
S-54	20	20 Cheyenne Avenue	Eaton	Residential	Single residence.	Spacing	Consolidate with S-56 when feasible.
S-55	20	20 Cheyenne Avenue	Eaton	Residential	Single residence.	Spacing	Consolidate with S-55 when feasible.
N-77	20		Eaton	Residential	Shared residential. Alley.	Spacing	
S-56	20,21	312 Collins Street	Eaton	Commercial	Fire department access.	Spacing	
S-57	21	50 S Maple Avenue	Eaton	Commercial	Fire department access.	Spacing	
N-78	21	3 Elm Avenue	Eaton	Residential	Single residence.	Spacing	Consolidate when feasible.
S-58	21	55 S Elm Avenue	Eaton	Commercial	Commercial bank access. Right-in right-out.	Spacing	Closure of access if fire department doesn't require it.
N-79	21		Eaton	Residential	Shared residential. Alley.	Spacing	
S-59	21	110 Collins Street	Eaton	Commercial	Commercial fast food restaurant access. Right-in right-out.	Spacing	
N-80	21	10 Oak Avenue	Eaton	Commercial	Commercial access.	Spacing	Reduce width of access. Ensure on-site parking is utilized correctly.
S-60	21	55 S Oak Avenue	Eaton	Commercial	Commercial gas station/fast food restaurant access.	Spacing	Reduce width of access. Ensure on-site parking is utilized correctly.
S-61	21		Eaton	Commercial	Commercial gas station access.	Spacing	Reduce width of access.
N-81	21	45 E Collins Street	Eaton	Commercial	Commercial auto parts store access.	Spacing	Consolidate when feasible.
N-82	21		Eaton	Commercial	Railroad ROW access.	Spacing	Consolidate when feasible.
S-62	21		Eaton	Commercial	Railroad ROW access.	Spacing	Consolidate when feasible.
S-63	21	350 E Collins Street	Eaton	Commercial	Commercial access.	Spacing	Consolidate when feasible.
S-64	21	450 E Collins Street	Eaton	Commercial	Commercial access.	Spacing	Consolidate when feasible.
N-83	21	95 Factory Road	Eaton	Commercial	Commercial access.	Spacing	Consolidate when feasible.
N-84	21,22	601 E Collins Street	Eaton	Commercial	Commercial access.	Spacing	One to be closed and reclaimed.
N-85	22	601 E Collins Street	Eaton	Commercial	Commercial access.	Spacing	
S-65	22	600 E Collins Street	Eaton	Commercial	Commercial access.	Spacing	Consolidate when feasible.
N-86	22	18709 CR 74	Eaton	Residential	Single residence.	Spacing	Consolidate when feasible.
S-66	22	900 E Collins Street	Eaton	Commercial	Commercial access.	Spacing	Consolidate when feasible.
S-67	22	920 E Collins Street	Eaton	Commercial	Commercial access.	Spacing	Consolidate when feasible.
S-68	22	940 E Collins Street	Eaton	Commercial	Commercial access.	Spacing	Consolidate when feasible.
S-69	22	960 E Collins Street	Eaton	Commercial	Commercial access.	Spacing	Consolidate when feasible.
S-70	22	970 E Collins Street	Eaton	Commercial	Commercial access.	Spacing	Consolidate when feasible.

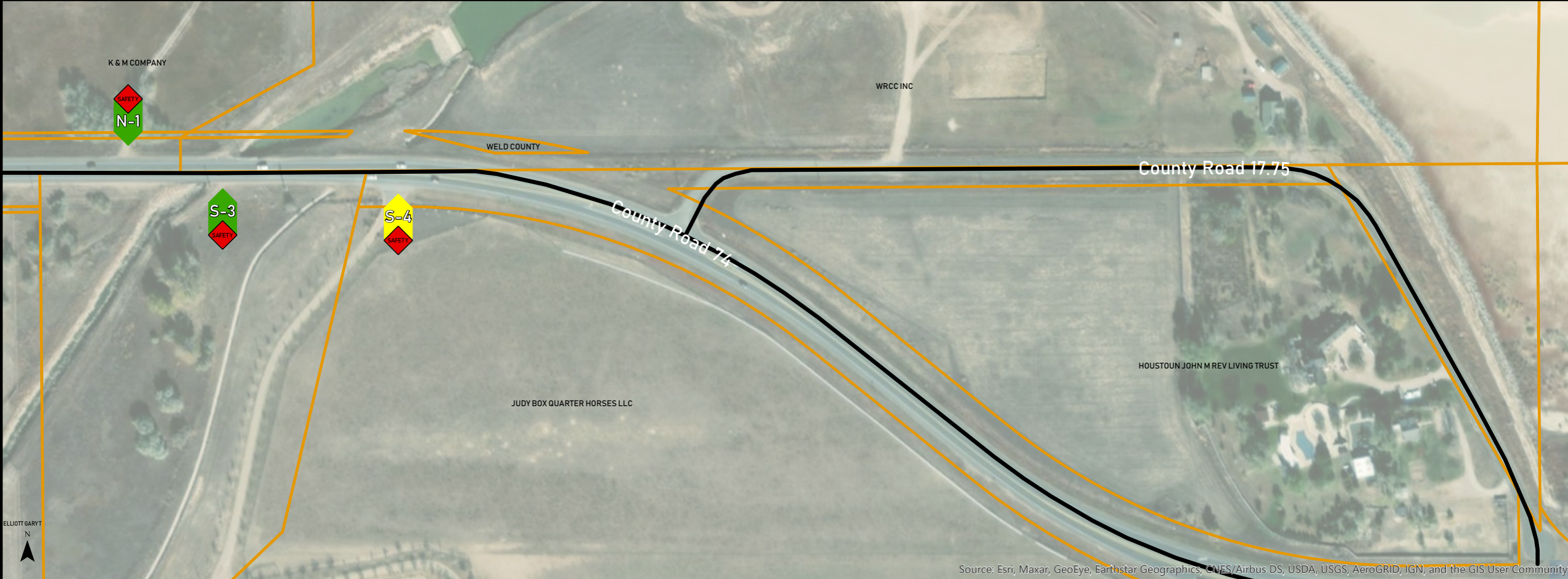
County Road 74 Access Control Plan Inventory

Segment 1 of 22

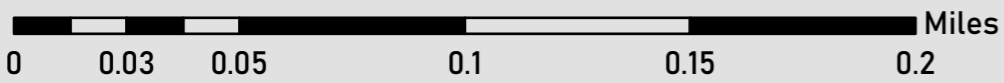


County Road 74 Access Control Plan Inventory

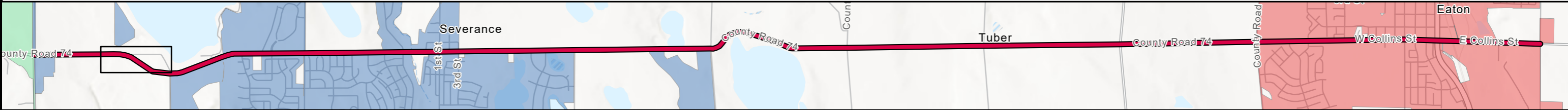
Segment 2 of 22



Source: Esri, Maxar, GeoEye, Earthstar Geographics, CNES/Airbus DS, USDA, USGS, AeroGRID, IGN, and the GIS User Community

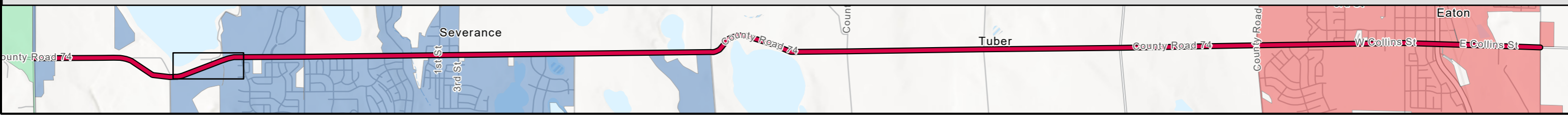
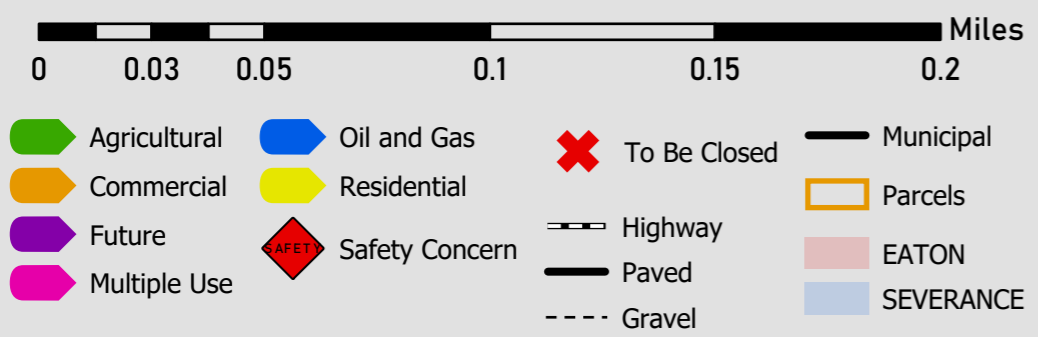


- | | | | |
|--------------|----------------|--------------|-----------|
| Agricultural | Oil and Gas | To Be Closed | Municipal |
| Commercial | Residential | Highway | Parcels |
| Future | Safety Concern | Paved | EATON |
| Multiple Use | | Gravel | SEVERANCE |



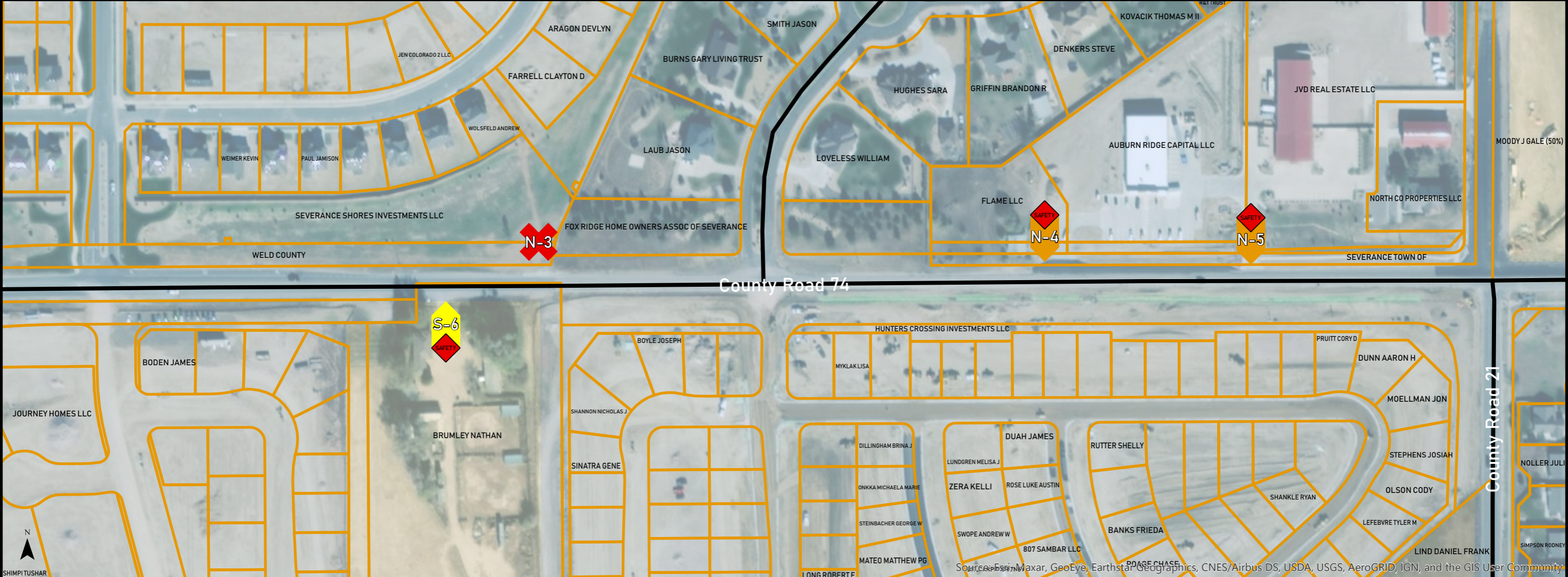
County Road 74 Access Control Plan Inventory

Segment 3 of 22

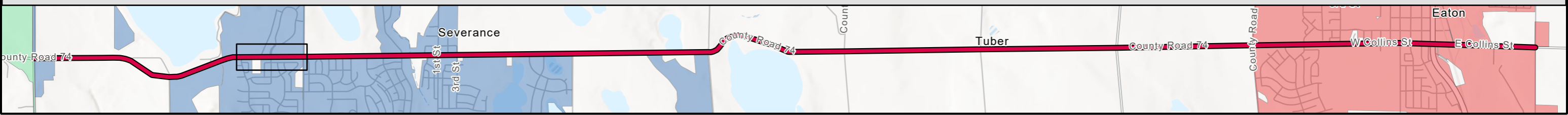
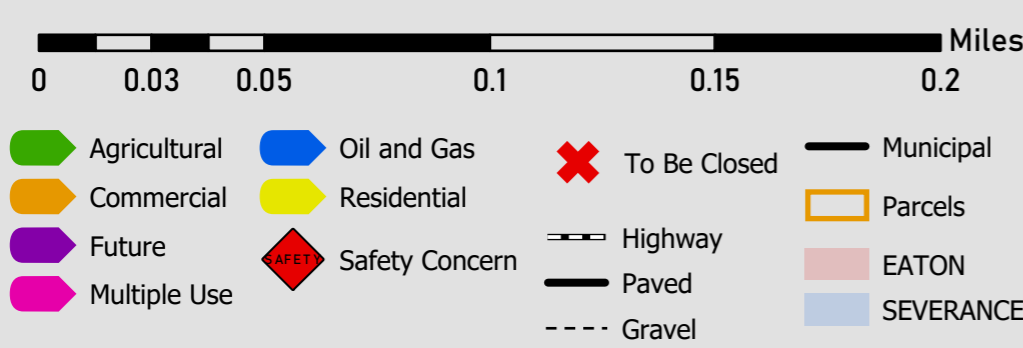


County Road 74 Access Control Plan Inventory

Segment 4 of 22



Source: Esri, Maxar, GeoEye, Earthstar Geographics, CNES/Airbus DS, USDA, USGS, AeroGRID, IGN, and the GIS User Community

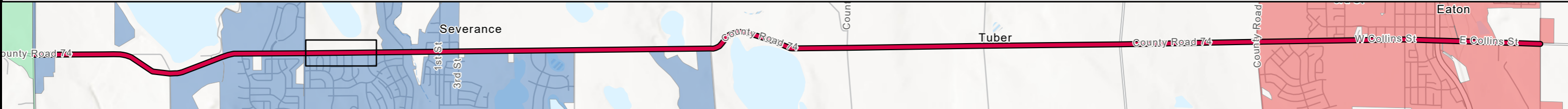
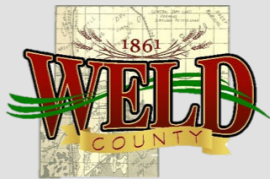
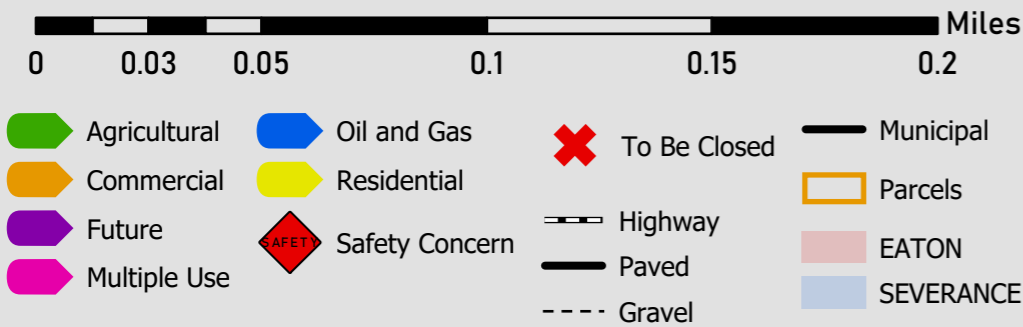


County Road 74 Access Control Plan Inventory

Segment 5 of 22

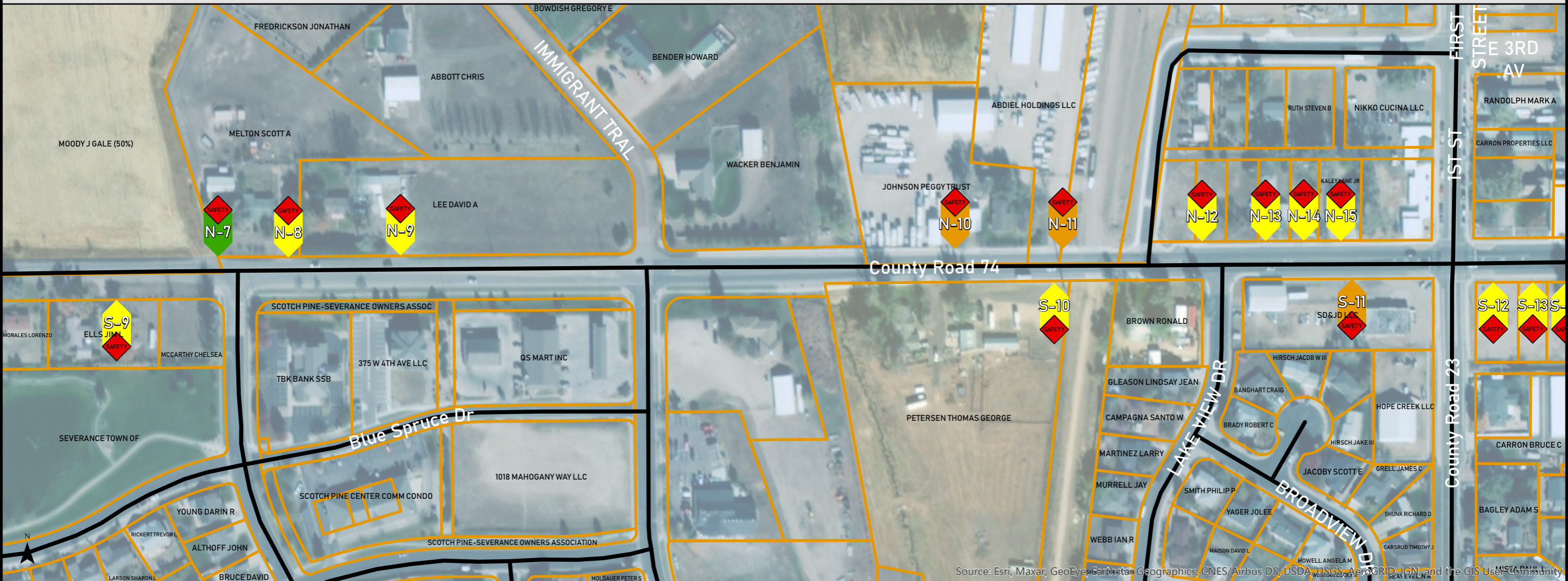


Source: Esri, Maxar, GeoEye, Earthstar Geographics, CNES/Airbus DS, USDA, USGS, AeroGRID, IGN, and the GIS User Community

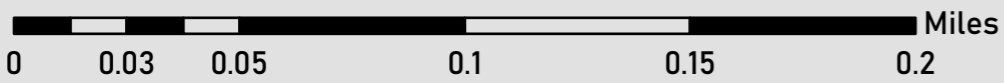


County Road 74 Access Control Plan Inventory

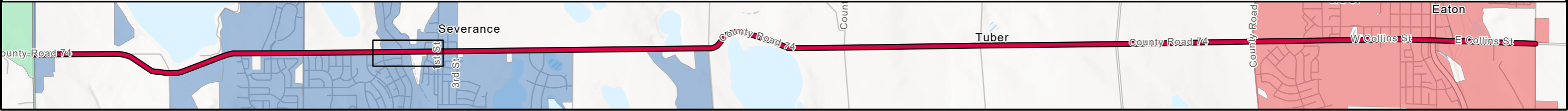
Segment 6 of 22



Source: Esri, Maxar, GeoEye, Earthstar Geographics, CNES/Airbus DS, USDA, USGS, AeroGRID, IGN, and the GIS User Community

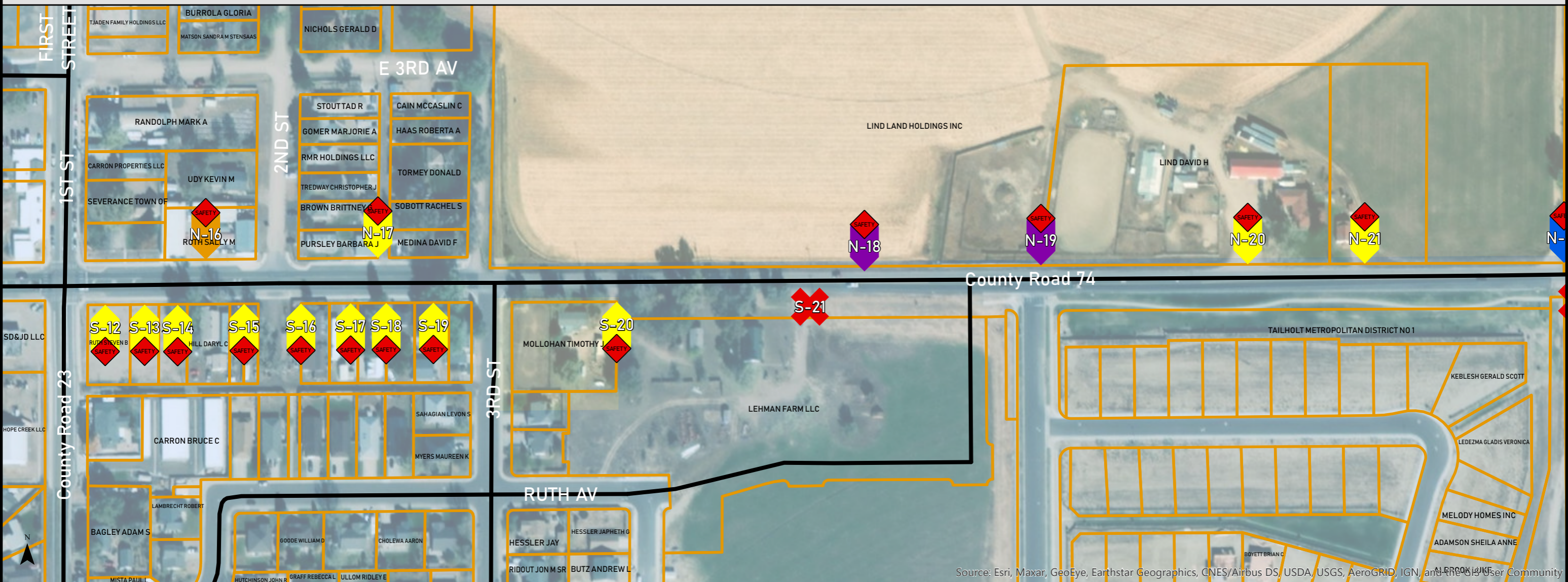


- | | | | |
|--------------|----------------|--------------|-----------|
| Agricultural | Oil and Gas | To Be Closed | Municipal |
| Commercial | Residential | Highway | Parcels |
| Future | Safety Concern | Paved | EATON |
| Multiple Use | | Gravel | SEVERANCE |

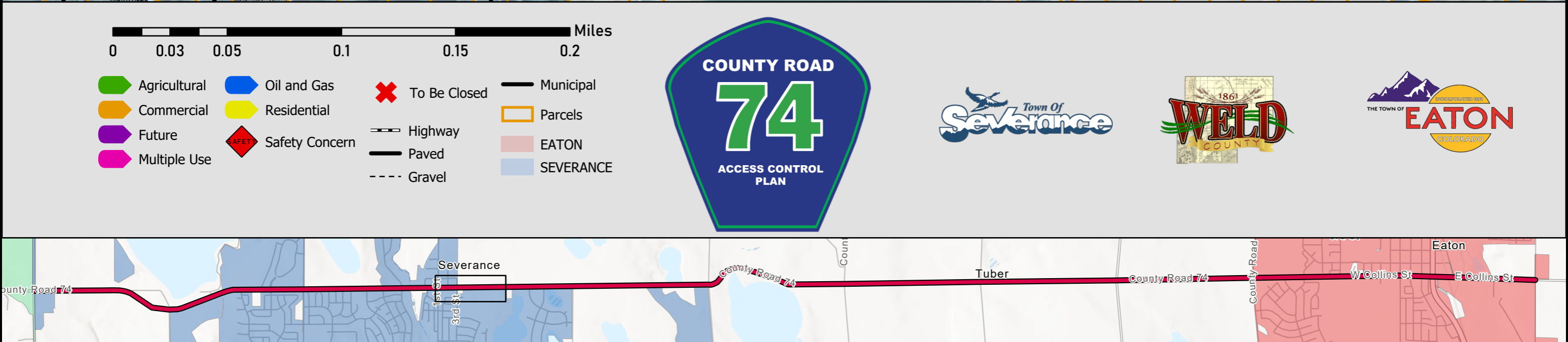


County Road 74 Access Control Plan Inventory

Segment 7 of 22



Source: Esri, Maxar, GeoEye, Earthstar Geographics, CNES/Airbus DS, USDA, USGS, AeroGRID, IGN, and the GIS User Community

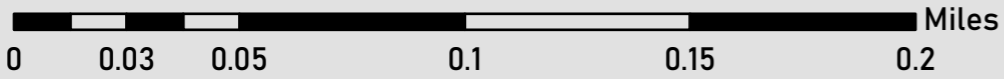


County Road 74 Access Control Plan Inventory

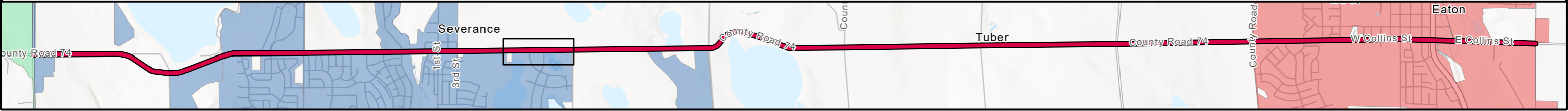
Segment 8 of 22



Source: Esri, Maxar, GeoEye, Earthstar Geographics, CNES/Airbus DS, USDA, USGS, AeroGRID, IGN, and the GIS User Community

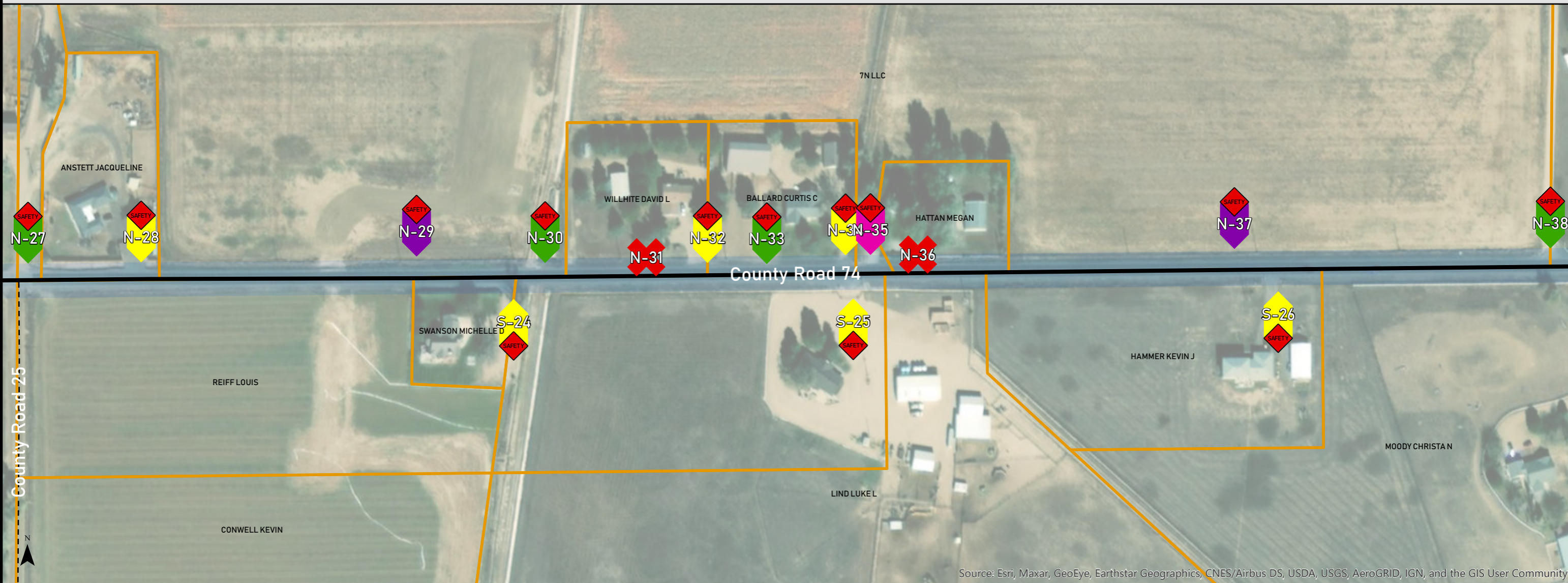


- | | | | |
|--------------|----------------|--------------|-----------|
| Agricultural | Oil and Gas | To Be Closed | Municipal |
| Commercial | Residential | Highway | Parcels |
| Future | Safety Concern | Paved | EATON |
| Multiple Use | | Gravel | SEVERANCE |

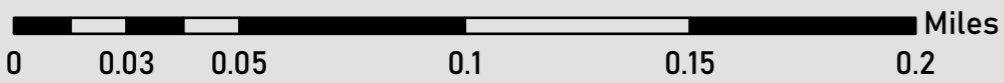


County Road 74 Access Control Plan Inventory

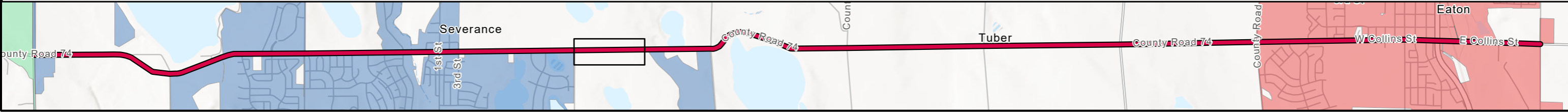
Segment 9 of 22



Source: Esri, Maxar, GeoEye, Earthstar Geographics, CNES/Airbus DS, USDA, USGS, AeroGRID, IGN, and the GIS User Community



- | | | | |
|--------------|----------------|--------------|-----------|
| Agricultural | Oil and Gas | To Be Closed | Municipal |
| Commercial | Residential | Highway | Parcels |
| Future | Safety Concern | Paved | EATON |
| Multiple Use | | Gravel | SEVERANCE |

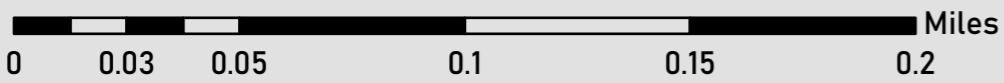


County Road 74 Access Control Plan Inventory

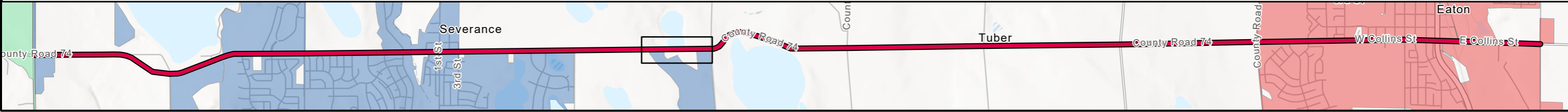
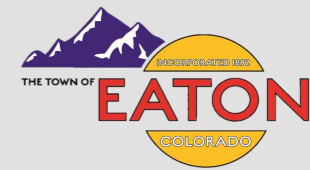
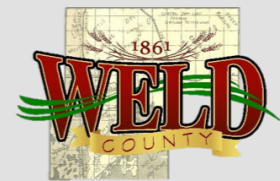
Segment 10 of 22



Source: Esri, Maxar, GeoEye, Earthstar Geographics, CNES/Airbus DS, USDA, USGS, AeroGRID, IGN, and the GIS User Community



- | | | | |
|--------------|----------------|--------------|-----------|
| Agricultural | Oil and Gas | To Be Closed | Municipal |
| Commercial | Residential | Highway | Parcels |
| Future | Safety Concern | Paved | EATON |
| Multiple Use | | Gravel | SEVERANCE |

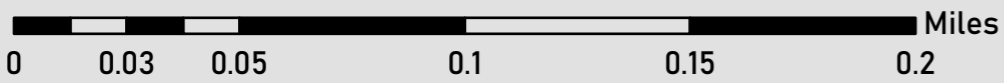


County Road 74 Access Control Plan Inventory

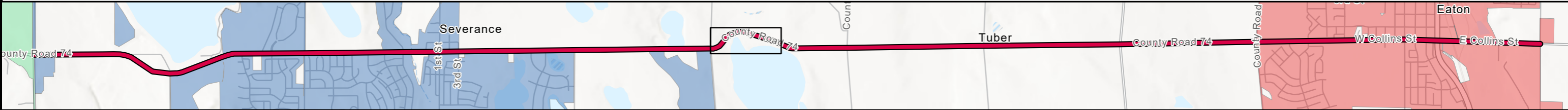
Segment 11 of 22



Source: Esri, Maxar, GeoEye, Earthstar Geographics, CNES/Airbus DS, USDA, USGS, AeroGRID, IGN, and the GIS User Community

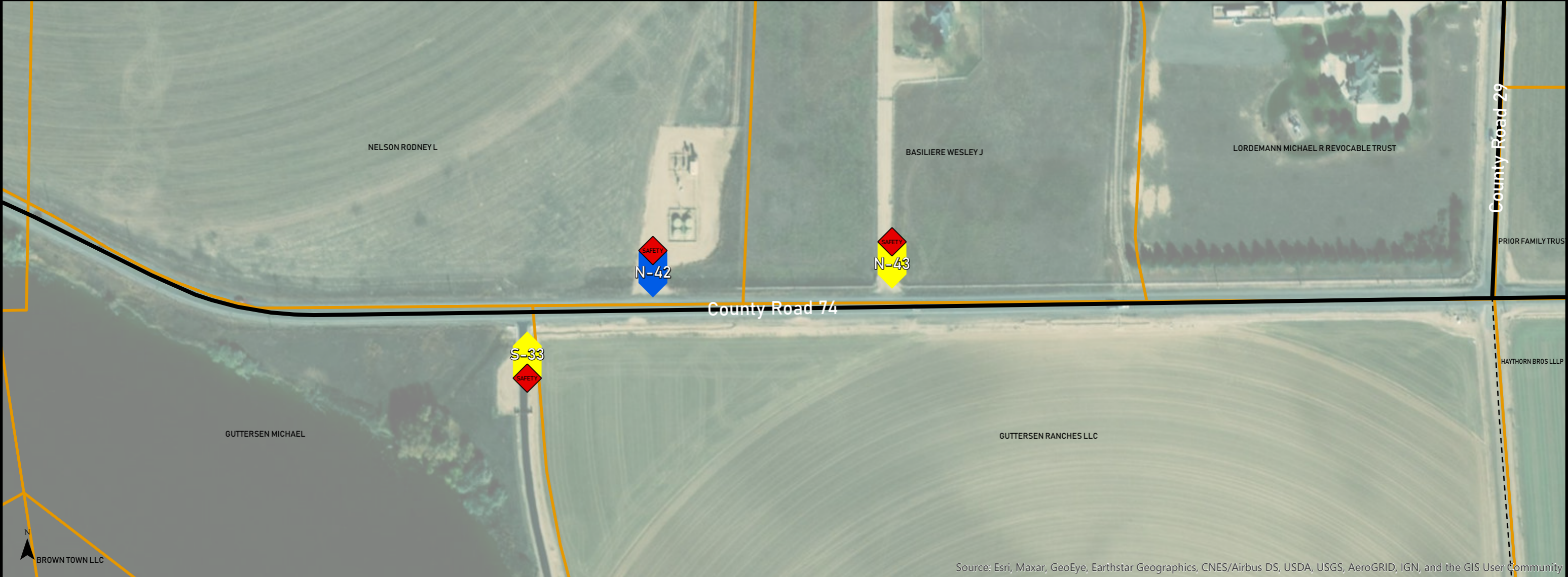


- | | | | |
|--------------|----------------|--------------|-----------|
| Agricultural | Oil and Gas | To Be Closed | Municipal |
| Commercial | Residential | Highway | Parcels |
| Future | Safety Concern | Paved | EATON |
| Multiple Use | | Gravel | SEVERANCE |

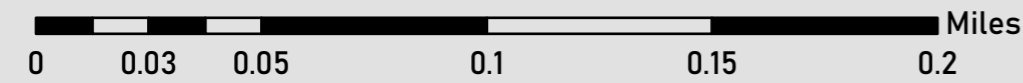


County Road 74 Access Control Plan Inventory

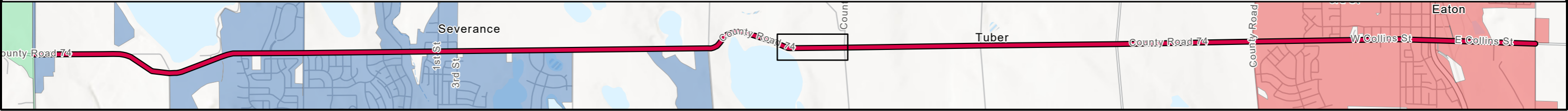
Segment 12 of 22



Source: Esri, Maxar, GeoEye, Earthstar Geographics, CNES/Airbus DS, USDA, USGS, AeroGRID, IGN, and the GIS User Community

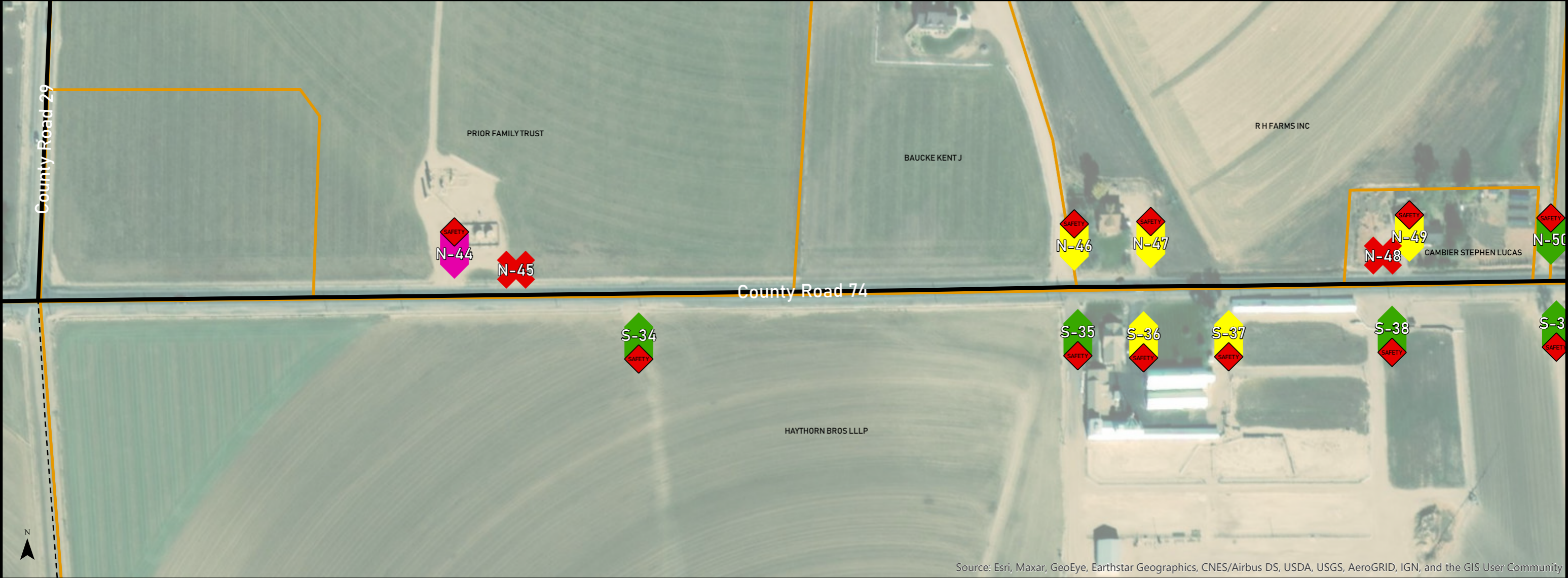


- | | | | |
|--------------|----------------|--------------|-----------|
| Agricultural | Oil and Gas | To Be Closed | Municipal |
| Commercial | Residential | Highway | Parcels |
| Future | Safety Concern | Paved | EATON |
| Multiple Use | | Gravel | SEVERANCE |

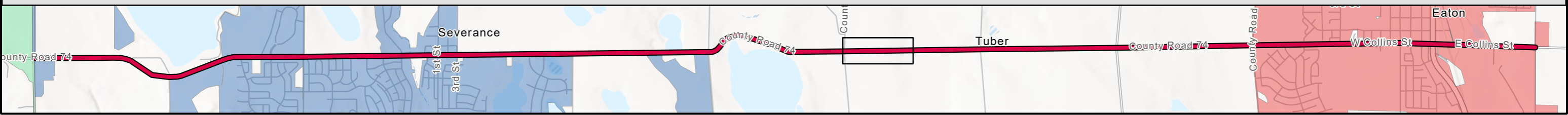
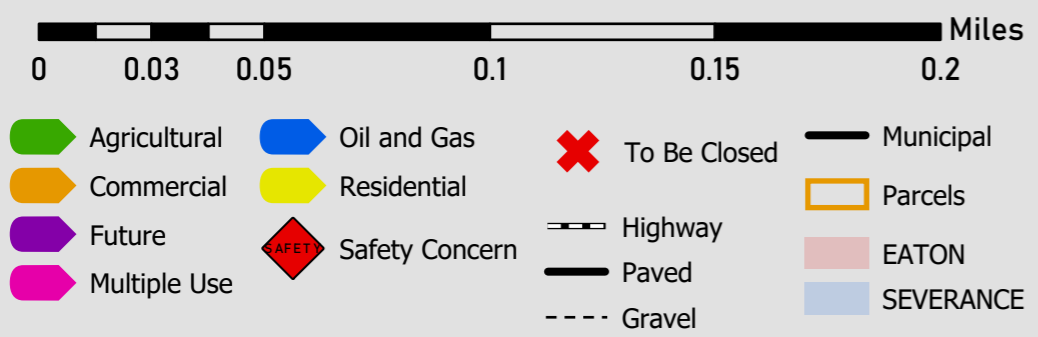


County Road 74 Access Control Plan Inventory

Segment 13 of 22



Source: Esri, Maxar, GeoEye, Earthstar Geographics, CNES/Airbus DS, USDA, USGS, AeroGRID, IGN, and the GIS User Community

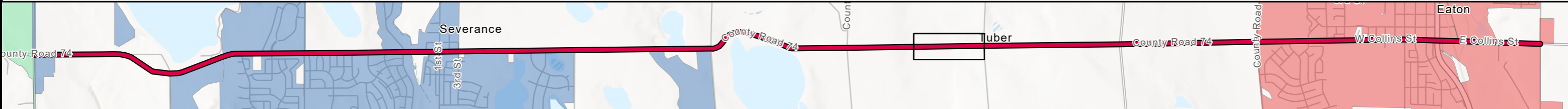
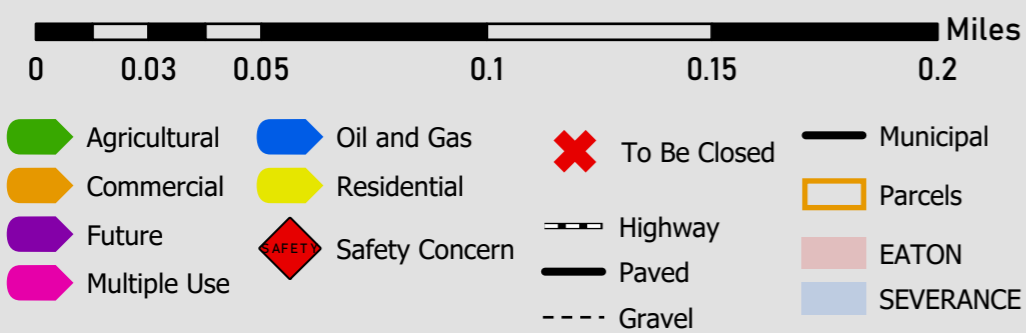


County Road 74 Access Control Plan Inventory

Segment 14 of 22

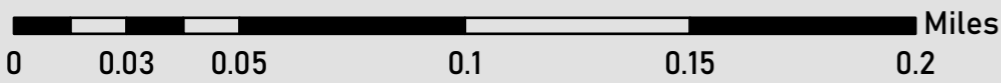


Source: Esri, Maxar, GeoEye, Earthstar Geographics, CNES/Airbus DS, USDA, USGS, AeroGRID, IGN, and the GIS User Community

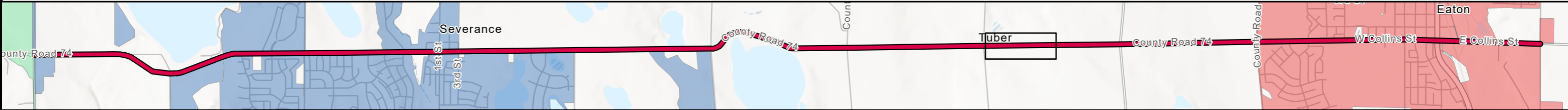


County Road 74 Access Control Plan Inventory

Segment 15 of 22



- | | | | |
|--------------|----------------|--------------|-----------|
| Agricultural | Oil and Gas | To Be Closed | Municipal |
| Commercial | Residential | Highway | Parcels |
| Future | Safety Concern | Paved | EATON |
| Multiple Use | | Gravel | SEVERANCE |

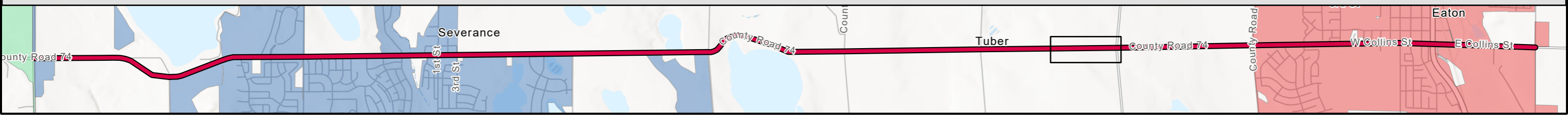
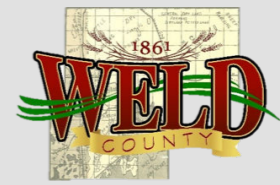
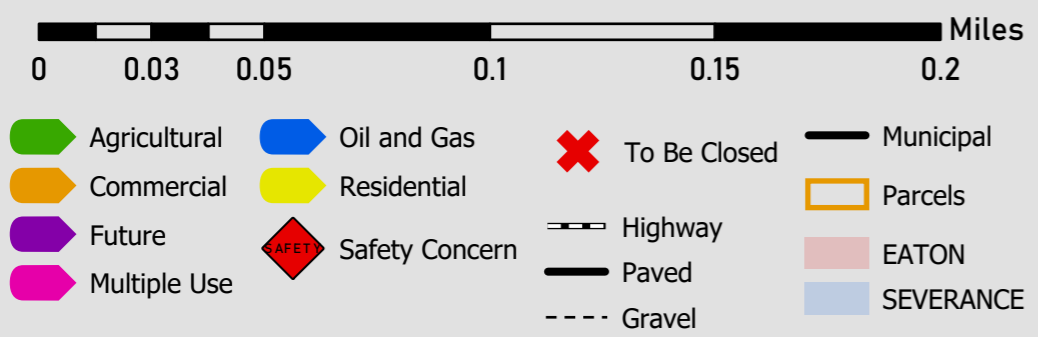


County Road 74 Access Control Plan Inventory

Segment 16 of 22



Source: Esri, Maxar, GeoEye, Earthstar Geographics, CNES/Airbus DS, USDA, USGS, AeroGRID, IGN, and the GIS User Community

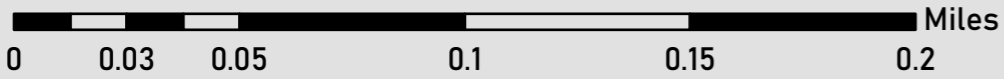


County Road 74 Access Control Plan Inventory

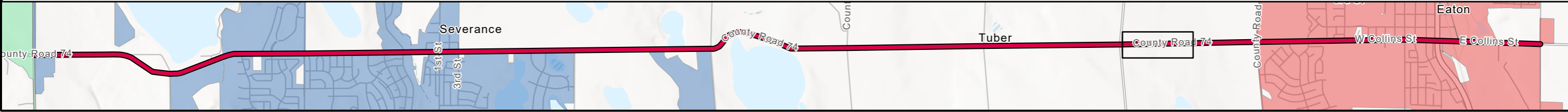
Segment 17 of 22



Source: Esri, Maxar, GeoEye, Earthstar Geographics, CNES/Airbus DS, USDA, USGS, AeroGRID, IGN, and the GIS User Community

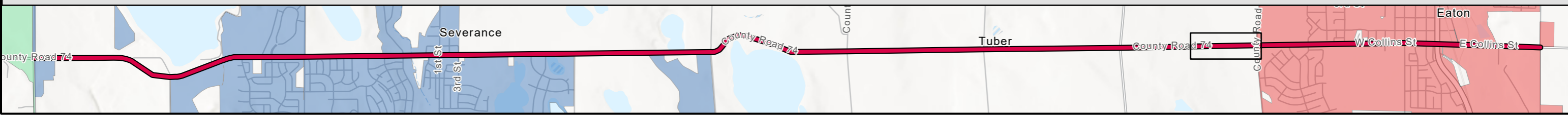
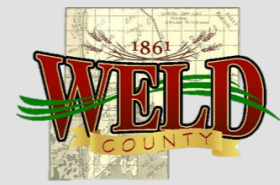
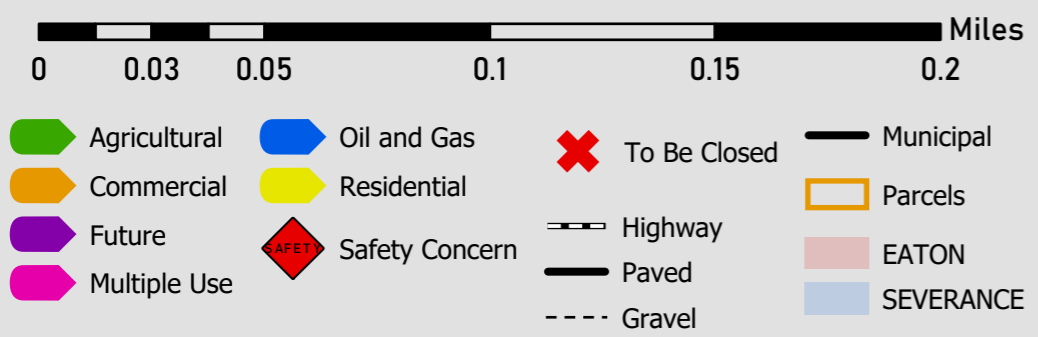


- | | | | |
|--------------|----------------|--------------|-----------|
| Agricultural | Oil and Gas | To Be Closed | Municipal |
| Commercial | Residential | Highway | Parcels |
| Future | Safety Concern | Paved | EATON |
| Multiple Use | | Gravel | SEVERANCE |

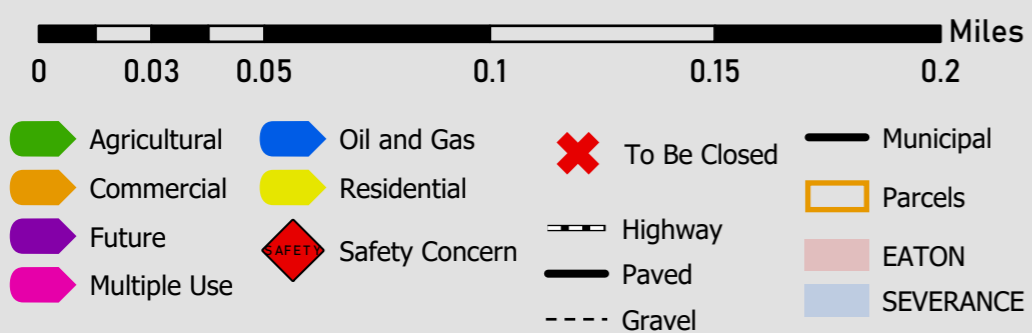
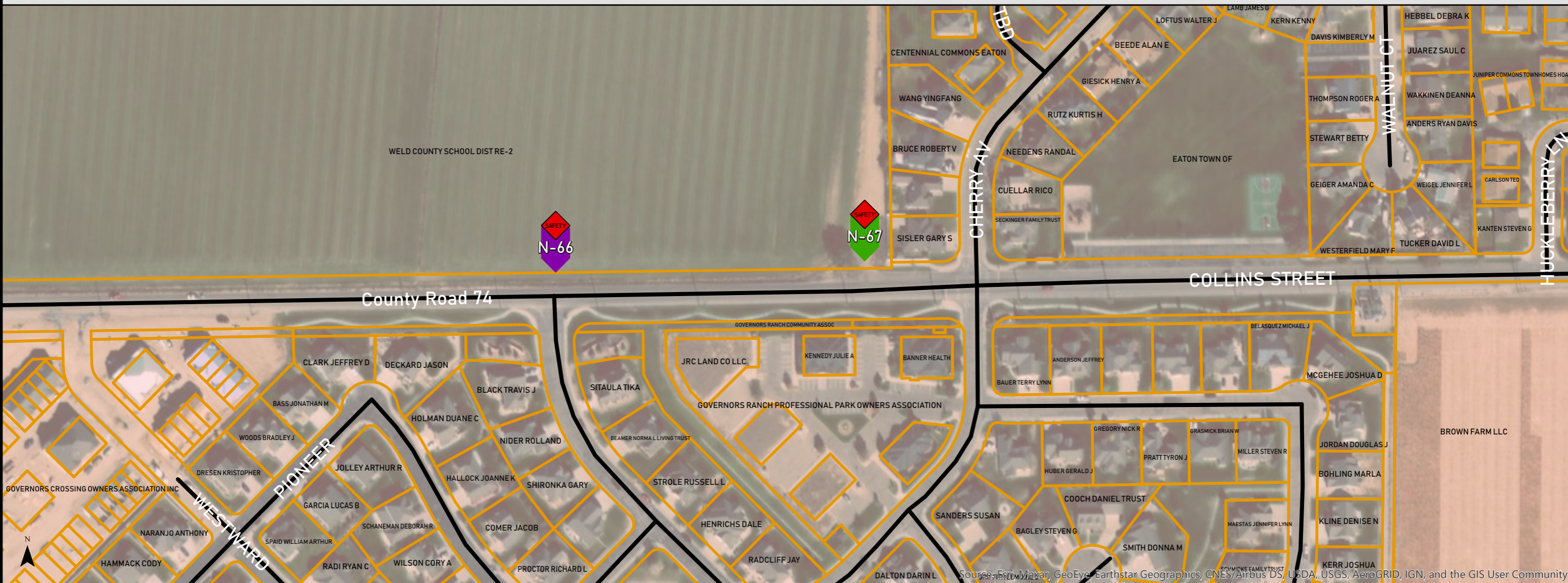


County Road 74 Access Control Plan Inventory

Segment 18 of 22

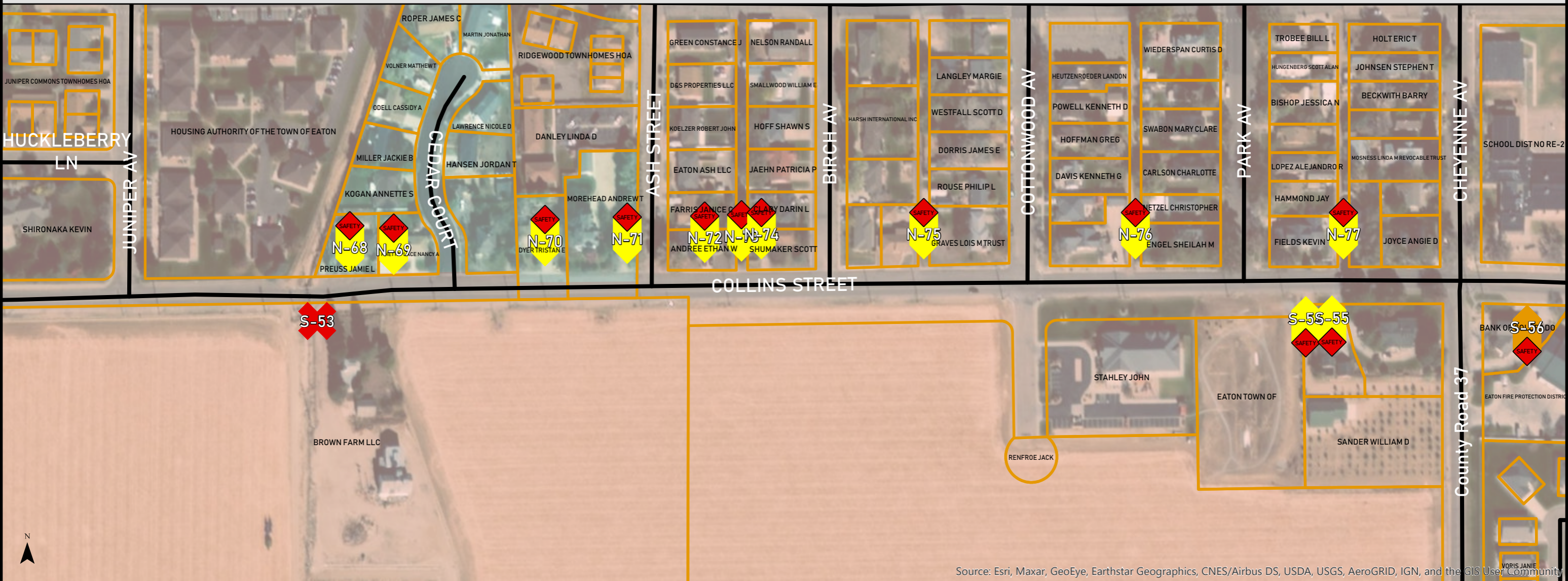


County Road 74 Access Control Plan Inventory
Segment 19 of 22

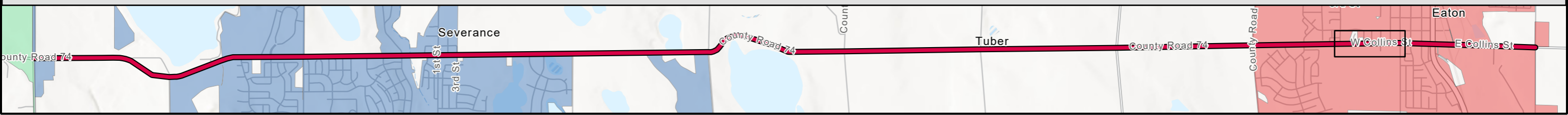
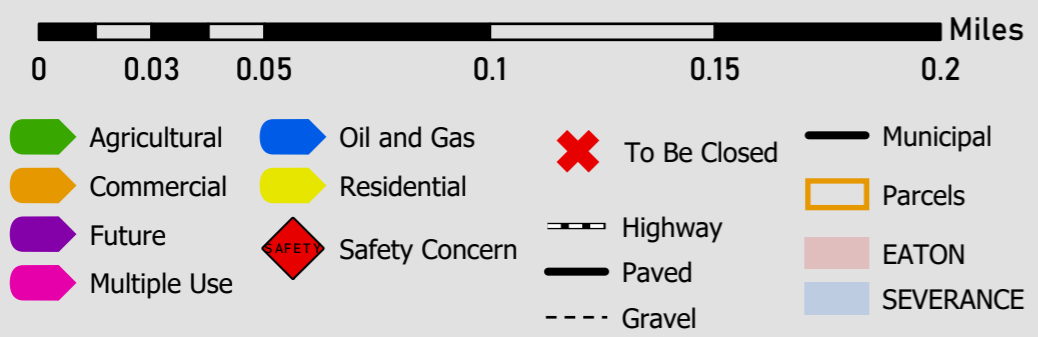


County Road 74 Access Control Plan Inventory

Segment 20 of 22

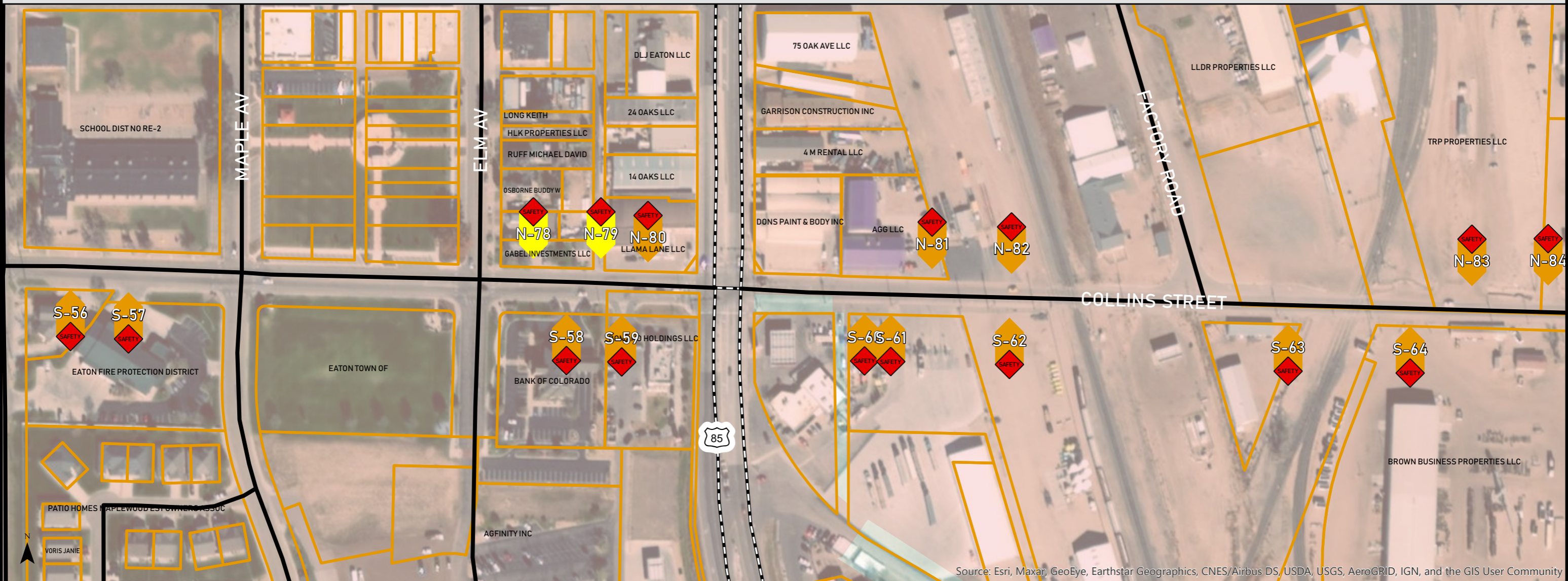


Source: Esri, Maxar, GeoEye, Earthstar Geographics, CNES/Airbus DS, USDA, USGS, AeroGRID, IGN, and the GIS User Community

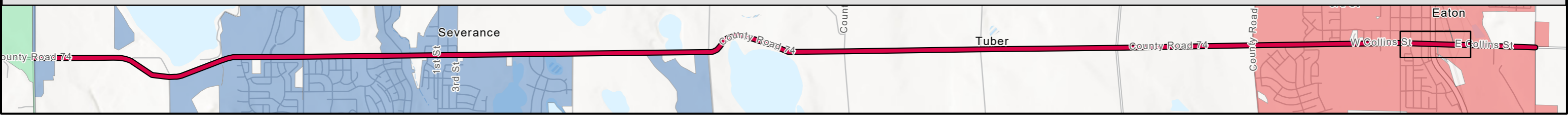
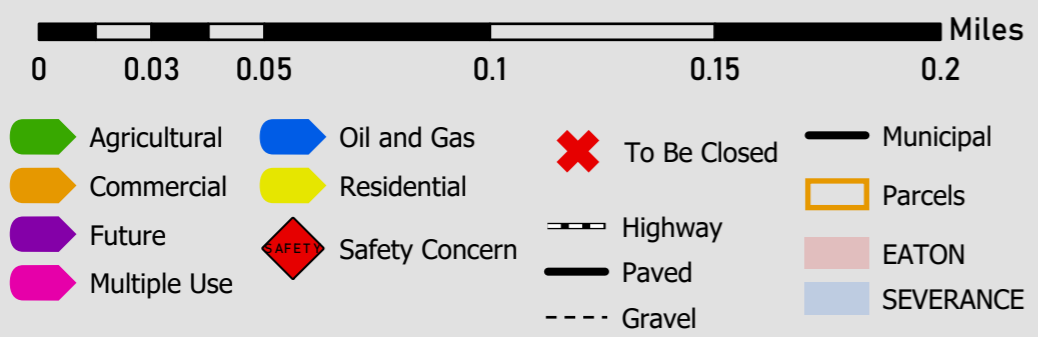


County Road 74 Access Control Plan Inventory

Segment 21 of 22



Source: Esri, Maxar, GeoEye, Earthstar Geographics, CNES/Airbus DS, USDA, USGS, AeroGRID, IGN, and the GIS User Community



County Road 74 Access Control Plan Inventory

Segment 22 of 22

